

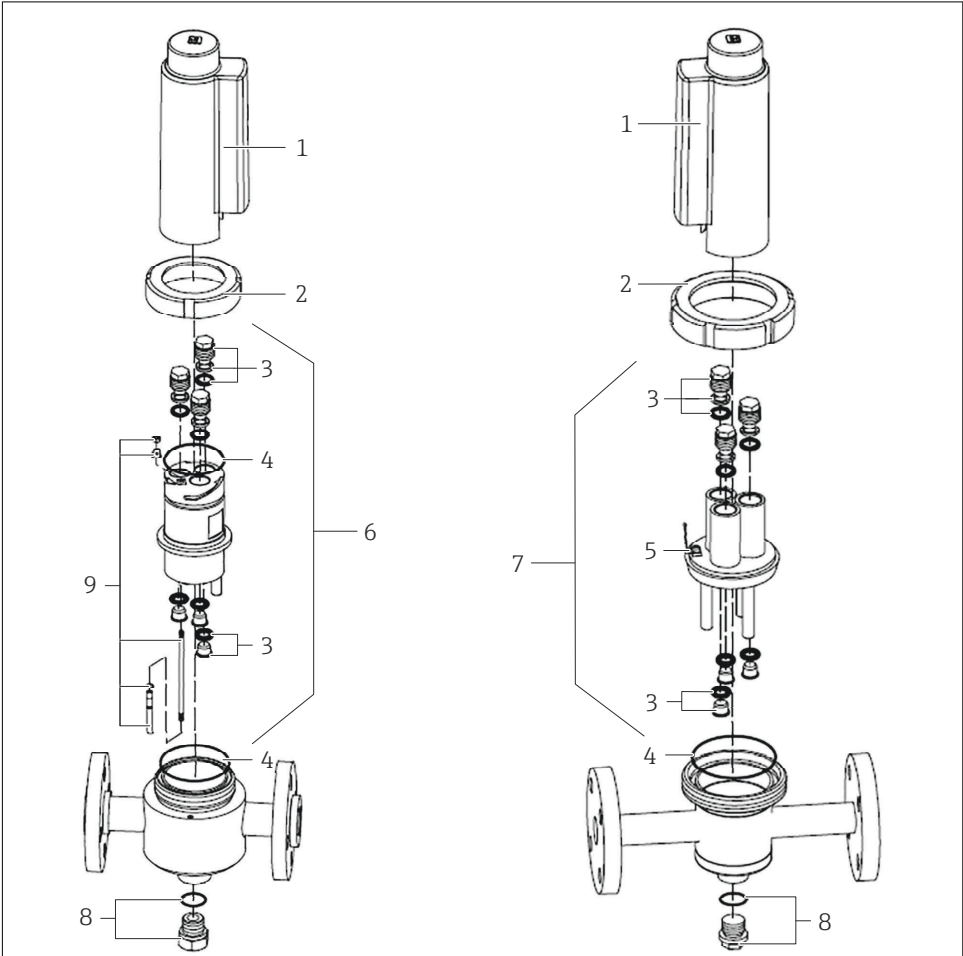
Installation Instructions

Kit for Cleanfit CPA240

Spare parts kits for flow assembly for 12 mm sensors



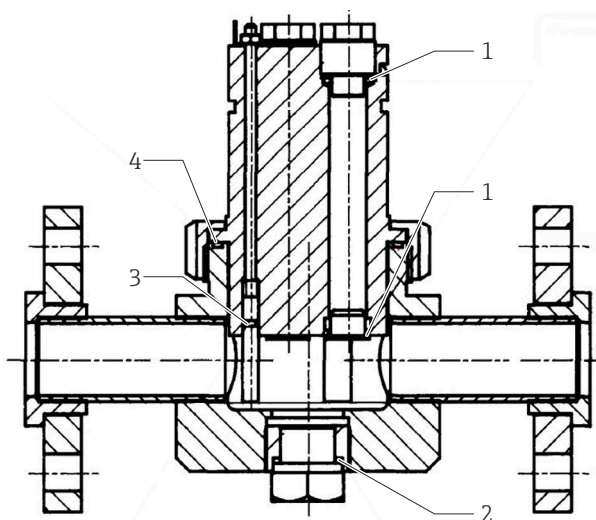
1 Overview of spare parts kits



A0047527

1 CPA240-2xxxxxx design (on left) and CPA240-30xxxxx design (on right)

1: Cover	6: Electrode holder PVDF
2: Coupling nut	7: Electrode holder 316L
3: Sealing plug and O-rings	8: Screw plug
4: O-ring	9: Potential matching pin
5: Protective ground terminal	



A0047529



2

Overview of seals for CPA240

1: O-ring ID 10.69 W 3.53 AD 17.75	3: O-ring ID 2.90 W 1.78 AD 6.46
2: O-ring ID 20.29 W 2.62 AD 25.53	4: O-ring ID 66.34 W 2.62 AD 71.58

2 Intended use

- The components of the service kit are to be used exclusively as conversion parts or spare parts for Flowfit flow assemblies CPA240. Any other use is not permitted!
- Use only original parts from Endress+Hauser.
- In the W@M Device Viewer, check if the spare part is suitable for the existing device.

3 Authorized installation personnel

- Installation, commissioning, operation and maintenance of the measuring system may be carried out only by specially trained technical personnel.
- The technical personnel must be authorized by the plant operator to carry out the specified activities.
- The electrical connection may be performed only by an electrical technician.
- The technical personnel must have read and understood these Operating Instructions and must follow the instructions contained therein.
- Faults at the measuring point may only be rectified by authorized and specially trained personnel.



Repairs not described in the Operating Instructions provided must be carried out only directly at the manufacturer's site or by the service organization.

4 Safety instructions

WARNING

Risk of injury from high pressure, high temperature or chemical hazards if process medium escapes!

- Before installing or removing an assembly, depressurize the system, drain the system and clean it.

CAUTION

Risk to health due to contact with the process medium

- Wear protective gloves, protective goggles and protective clothing, particularly when working with reagents, chemicals or process solutions.
- In case of contact with eyes or skin, rinse the affected area with plenty of water and then seek medical advice. Show the relevant safety data sheet to the physician.

NOTICE

Material damage due to solvents!

- Do not use any halogen-containing organic solvents or acetone. These solvents could destroy plastic components of the assembly.




Potential impact on the process

Before decommissioning an active device, the potential impact on the overall process must be taken into account! This applies in particular when using the associated measuring device to control process variables.

5 Scope of delivery

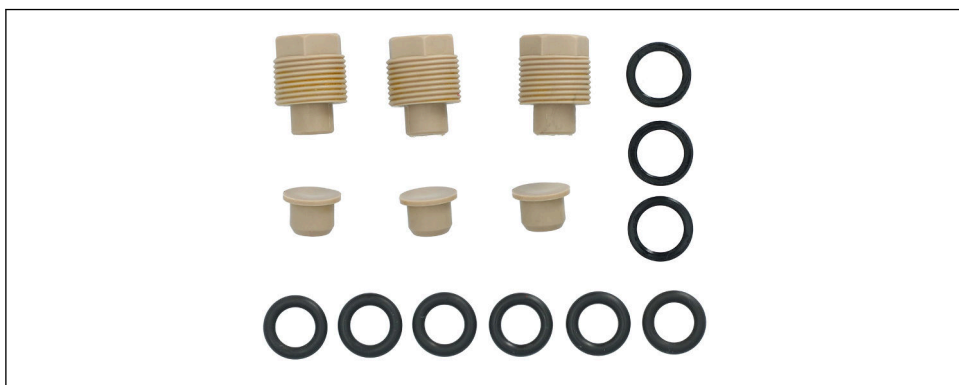
5.1 Kit CPA140/240, PEEK sealing plug

 The difference between the contents of the following kits is the O-ring material:


- 51501153 kit CPA140/240 sealing plug; Fluoraz
- 51501152 kit CPA140/240 sealing plug; Chemraz
- 51501151 kit CPA140/240 sealing plug; Viton
- 51501149 kit CPA140/240 sealing plug; EPDM

The kits contain the following parts →  3,  5:


3 x	dummy plug PG13.5 PEEK	3 x	dummy plug PEEK
3 x	thrust collar ETB/ETC/ETO GT	1 x	instructions for service kit
6 x	O-ring ID 10.69 W 3.53 OD 17.75; for material see above		



A0047526

 3 51501149 kit CPA140/240 sealing plug; EPDM

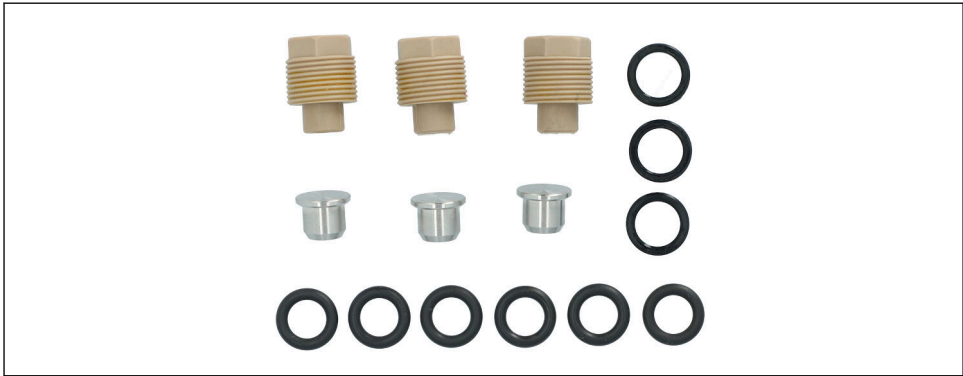
5.2 Kit CPA140/240, stainless steel sealing plug

 The difference between the contents of the following kits is the O-ring material:


- 71546244 kit CPA240 sealing plug; PEEK/316L Fluoraz
- 71546245 kit CPA240 sealing plug; PEEK/316L Chemraz
- 71546246 kit CPA240 sealing plug; PEEK/316L Viton
- 71546247 kit CPA140/240 sealing plug; PEEK/316L EPDM

The kits contain the following parts →  4,  6:

3 x	dummy plug PG13.5 PEEK	3 x	dummy plug, stainless steel
3 x	thrust collar ETB/ETC/ETO GT	1 x	instructions for service kit
6 x	O-ring ID 10.69 W 3.53 AD 17.75; for material see above		



A0047525

 4 71546247 kit CPA140/240 sealing plug; PEEK/316L EPDM

6 Additional documentation

Detailed information on the device can be found in the Operating Instructions for the specific assembly and in the other documentation available via:

- www.endress.com/device-viewer
- Smartphone / tablet: Endress+Hauser Operations app

7 Replacing the sealing plug

- ▶ Ensure that there is no medium flowing through the assembly and that the assembly is free from pressure.
- ▶ Pay attention to the installation instructions provided in the Operating Instructions of the assembly used.

1. Remove the cover by pulling upwards.



A0047530

2. Release the coupling nut (turn anti-clockwise) and lift it off.



A0047538

3. Remove the electrode holder from the flow vessel.



A0047528

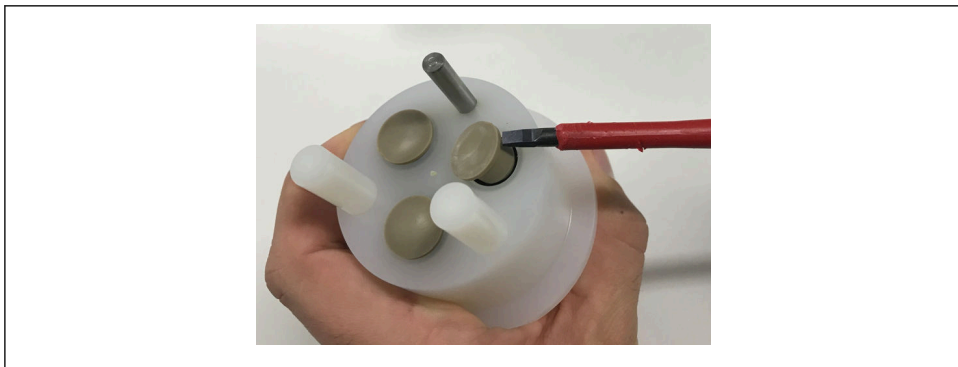
i The images show the sealing plugs made of PEEK material. For the CPA240 made of stainless steel, the sealing plugs can also be stainless steel.

4. Position the electrode holders in such a way that the base of the electrode holder is accessible.



A0047537

5. Apply a flat, wide-blade screwdriver to the base of the sealing plug and gently lever it out.




A0047581

NOTICE

Risk of injury due to screwdriver!

When levering out the sealing plug, the screwdriver may slip and cause injury.

- Remove the sealing plug carefully.

 Before inserting a new sealing plug, ensure that the existing seal is not damaged. Insert a new seal if necessary!

6. Insert the new sealing plug into the electrode holder and re-assemble the assembly. To do so, follow steps 1-4 in reverse order.

8 Disposal

8.1 Assemblies

- Please observe local regulations!

8.2 Sensors



If required by the Directive 2012/19/EU on waste electrical and electronic equipment (WEEE), the product is marked with the depicted symbol in order to minimize the disposal of WEEE as unsorted municipal waste. Do not dispose of products bearing this marking as unsorted municipal waste. Instead, return them to Endress+Hauser for disposal under the applicable conditions.



71557789

www.addresses.endress.com
